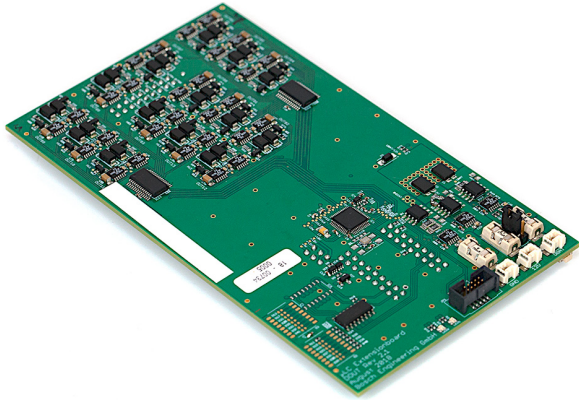


Expansion Board Digital Outputs



- ▶ 14 additional digital outputs included
- ▶ Short circuit proof
- ▶ Change to individual states possible: Low, High, High-Z

The **Expansion Board Digital Outputs** extends the functions of the **μLC Test System** without intervening the software and without activating additional mechanisms. Digital Outputs provides 14 digital outputs, which can be switched individually to the states **Low**, **High** or **High-Z**. All outputs can be switched simultaneously.

Application

Output voltage	Min	Max
μLC 3.1	-1 V	24 V

Technical Specifications

DC characteristics

Parameters	Conditions	Value
U_{out}	Output = Low	<1.1 V
$U_{in}-U_{out}$	Output = High	<1.8 V
R_{out}	Output = High-Z	>10 MOhm
$I_{out}^* prot$	Channel shutdown threshold	±1 A
$\sum I_{out}^* prot$	Shutdown threshold total current all outputs	±3.33 A

Timing measured at $U_{in} = 24 V$

Parameters	Conditions	Value
t_{rise}	Load of 500 Ohm to GND	58 μs
	Load of 500 Ohm to 24 V	0.3 μs
	Without load	62 μs
t_{fall}	Load of 500 Ohm to GND	0.8 μs
	Load of 500 Ohm to 24 V	5.5 μs
	Without load	12 μs
$t_{restart}^*$		33.6 ms

*: Restart time after overcurrent

Legal Restrictions

The sale of this product in Mexico is prohibited. Due to embargo restrictions, sale of this product in Russia, Belarus, Iran, Syria, and North Korea is prohibited.

Ordering Information

Expansion Board Digital Outputs
Order number **F02U.V02.904-01**

Represented by:

Europe:
Bosch Engineering GmbH
Motorsport
Robert-Bosch-Allee 1
74232 Abstatt
Germany
Tel.: +49 7062 911 9101
Fax: +49 7062 911 79104
motorsport@bosch.com
www.bosch-motorsport.de

North America:
Bosch Engineering North America
Motorsport
38000 Hills Tech Drive
Farmington Hills, MI 48331-3417
United States of America
Tel.: +1 248 876 2977
Fax: +1 248 876 7373
motorsport@bosch.com
www.bosch-motorsport.com

Asia-Pacific:
Bosch Engineering Japan K.K.
Motorsport
18F Queen's Tower C, 2-3-5 Minato
Mirai Nishi-ku, Yokohama-shi
Kanagawa 220-6218
Japan
Tel.: +81 45 650 5610
Fax: +81 45 650 5611
www.bosch-motorsport.jp

Australia, New Zealand and South Africa:
Robert Bosch Pty. Ltd
Motorsport
1555 Centre Road
Clayton, Victoria, 3168
Australia
Tel.: +61 (3) 9541 3901
motor.sport@au.bosch.com