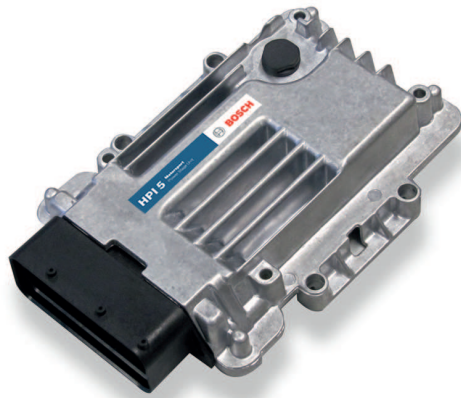


# Injection Power Stage HPI 5



- ▶ Max. 8 cylinders
- ▶ Max. 14,000 rpm (4 cyl. operation)
- ▶ 550 g

The injector power stage HPI 5 is a device for driving injectors and high pressure pumps for gasoline direct injection. Combined with a suitable ECU up to 8 injectors can be driven. The injectors are gathered in 4 groups of 2 injectors each. Within a group only one injector can be switched on at the same time. The 4 groups are totally independent, so that overlapping injection of injectors of different groups is possible. The HPI 5 is mainly designed to drive the Bosch high pressure pump HDP 5. Communication between main ECU and the HPI 5 is realized via CAN interface.

## Application

Max. number of cylinders	8
Max. rpm (8 cyl. operation)	7,000
Max. rpm (4 cyl. operation)	14,000

## Technical Specifications

### Mechanical Data

Aluminum housing	
Each connector pin individually filtered	
Housing temperature	-25 to 85°C

Size (incl. connectors)	190 x 123 x 36 mm
Weight	550 g

### Electrical Data

Voltage supply	14 V
Operating voltage	10 to 16 V
Operation voltage (engine start)	6.5 to 16 V
Nominal voltage	14 V

### Connectors and Wires

Mating connector	D 261 205 353-01
------------------	------------------

### Communication

1 CAN (1 Mbaud)
-----------------

### Ordering Information

**Injection Power Stage HPI 5**  
Optimized for Bosch HDP 5  
Order number **F 02U V00 929-02**

**Injection Power Stage HPI 5**  
Optimized for Hitachi HDP Gen 1  
Order number **F 02U V01 055-02**

#### Represented by:

**Europe:**  
Bosch Engineering GmbH  
Motorsport  
Robert-Bosch-Allee 1  
74232 Abstatt  
Germany  
Tel.: +49 7062 911 9101  
Fax: +49 7062 911 79104  
motorsport@bosch.com  
www.bosch-motorsport.de

**North America:**  
Bosch Engineering North America  
Motorsport  
38000 Hills Tech Drive  
Farmington Hills, MI 48331-3417  
United States of America  
Tel.: +1 248 876 2977  
Fax: +1 248 876 7373  
motorsport@bosch.com  
www.bosch-motorsport.com

**Latin America:**  
Robert Bosch Ltda  
Motorsport  
Av Juscelino Kubitschek de Oliveira  
11800  
Zip code 81460-900 Curitiba - Parana  
Brazilia  
Tel.: +55 41 3341 2057  
Fax: +55 41 3341 2779

**Asia-Pacific:**  
Bosch Engineering Japan K.K.  
Motorsport  
18F Queen's Tower C, 2-3-5 Minato  
Mirai Nishi-ku, Yokohama-shi  
Kanagawa 220-6218  
Japan  
Tel.: +81 45 650 5610  
Fax: +81 45 650 5611  
www.bosch-motorsport.jp

**Australia, New Zealand and South Africa:**  
Robert Bosch Pty. Ltd  
Motorsport  
1555 Centre Road  
Clayton, Victoria, 3168  
Australia  
Tel.: +61 (3) 9541 3901  
motor.sport@au.bosch.com