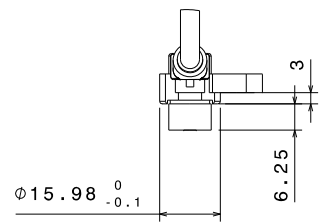
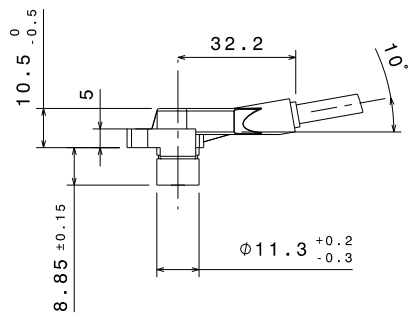
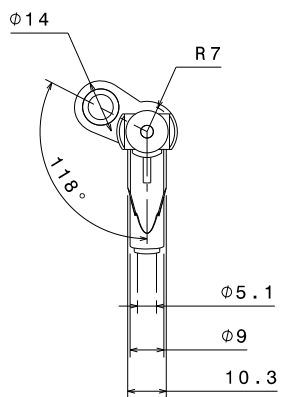
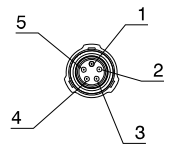


ISO Sys. of Limits & Fits/ISO-Sys. Grenz- u. Pass.		ISO 286-2:1988-06	
Size/Größe	tol. class/Größen	Limit dev./Grenzabw.	Upper/lower
General tolerances for Allgmeintoleranzen für			
lin. dim./Länge	radial/Radial	angles/Winkel	



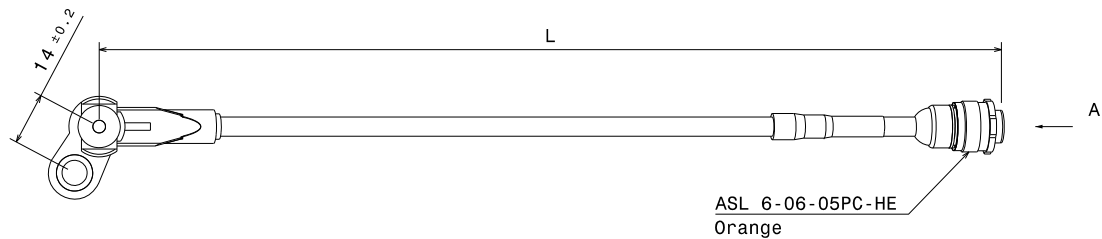
Ansicht A
view



Pinbelegung/
Pin assignment:

- Spannungsversorgung/
Power supply Us1 (5...18V)
- Masse/GND
- Signal/Output
- Frei/free
- Frei/free

ASL 6-06-05PC-HE



Verwendung als Drehzahlsensor

Einbauvorschriften:

Erste Abstützstelle des Kabels max. 150mm (gestreckte Laenge) nach der Steckverbindung.
Kabel darf erst 10mm nach Austritt aus Kunststoff gebogen werden.

Einbauempfehlung:

Maximal zulaessiges Anziehdrehmoment: 8±1Nm

Application as speed sensor

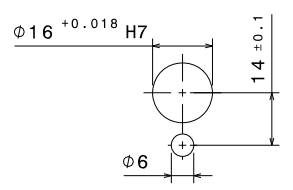
Installation requirements:

First cable mounting point max. 150mm (straight cable length) after the plug.
Bending of the cable is only allowed after 10mm cable length from sensor head.

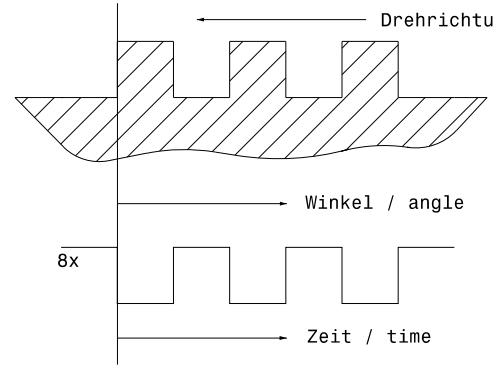
Recommended installation:

Max. allowed torque: 8±1Nm

Einbauvorschrift
Mounting requirement



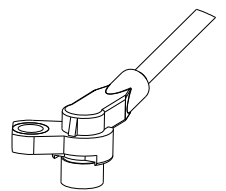
Signal-Definition
Signal definition



Drehrichtung / direction of rotation
Zahnrad "abgerollt" /
Cogwheel "unrolled"

Ausgangssignal/
Output signal

**Isometrische Ansicht/
Isometric view**
M 1:1



© Robert Bosch GmbH. All rights reserved. This document is intended for internal use only. Reproduction, distribution, or modification is prohibited without prior written permission from the company.

F02U V00 564-01 CE	max. 270±5	ASL 6-06-05PC-HE
Bestell-Nr./ order no.	Laenge L/ length [mm]	Stecker/ connector

01 Erstanlage	20080827	ShN	TOGE/BEG/MSD1
Ind. Change/Änderung	YYYYMMDD	Drawn/Gez.	Checked/Gepr.
Lang./Spr.	Syst.	Wght./Gew.	Releas./Freig.
en/de	CAT	Scale/Ver.stab	Resp. dept./Verante.Abt.
MNR	1:1	1:1	Respl. by

BOSCH Mini HA-P Drehzahlsensor
Mini HA-P Speed sensor

Doc. Type DRW F 02U V00 564-01
ANGEBOTSZEICHN. Repl. for