



ABS M4 Kit



- Suitable for front-wheel, rear-wheel and four-wheel drive vehicles

The ABS M4 kit is developed for the operation in front-, rear- or 4-wheel drive vehicles. A vehicle specific wire harness is included in the kit. The ABS M4 is specifically adapted for motorsports use. Individual car parameters can be calibrated with software free of charge.

Technical Specifications

Variations

ABS M4 Kit 1	ABS M4 Kit 2
Customer specific wire harness with motorsport connectors, wheel speed sensors with production-type connectors	Customer specific wire harness with motorsport connectors, wheel speed sensors with motorsport connectors

Mechanical Data

Hydraulic unit with attached ECU

Vibration damped circuit board	
38 pin connector	
2 hydraulic valves per wheel	
2 brake circuits (front and rear)	
2 hydraulic high pressure pumps	
2 hydraulic accumulators 3 cm ³ /each	
Standard fittings	2 x master cylinders M12 x 1 4 x brake cylinders M10 x 1
Size	125 x 80.3 x 129.6 mm

Hydraulic unit with attached ECU

Weight	1,850 g
Operating temperature	-30 to 130°C
Max. shock	50 g less than 6 ms

Electrical Data

Supply voltage	8 to 16 V, max. 26 V for 5 min
Max. peak voltage	35 V for 200 ms
Power consumption	8 W stand-by, 230 W in operation

Inputs

4 active wheel speed DF11
Brake pressure (front brake circuit)
Longitudinal acceleration
Lateral acceleration
Yaw rate
Brake light switch
12 position function switch:
9 switch positions preconfigured
2 switch positions programmable
1 switch position for ABS function OFF

Outputs

- ABS warning light (MIL)
- Control of internal ABS valves
- Control of pump motor

Optional Accessories

- Additional package ASR (Traction control), includes software, map switch and CAN module on request
- Additional package EBD (Electronic Brake force Distribution) on request
- Communication interface F 02U V00 327-01 MSA Box II
- Wheel speed signal splitters:
 - Single, without connectors F 02U V00 225-01
 - Single, motorsport connectors F 02U V00 209-01
 - Quad, 2 motorsport connectors F 02U V00 203-03

- Quad, 1 motorsport connector F 02U V00 335-03
- Data logger C 50 F 02U V01 164-01
- Display DDU 7 F 02U V01 130-01

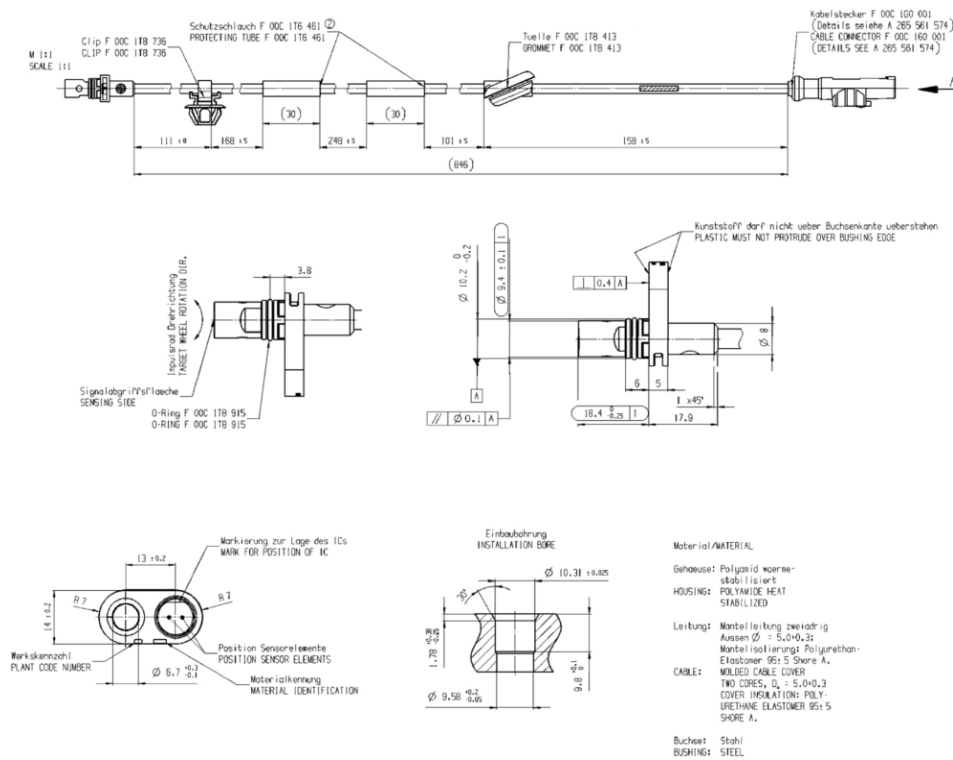
Communication

CAN interface

Content of Kit

- Hydraulic unit with attached ECU
- Pressure sensor
- Yaw/acceleration sensor
- 12 position function switch
- 4 wheel speed sensors DF11 standard
- ABS warning light
- Vehicle specific wire harness
- Vibrations damping boards

Dimensions



Wheel Speed Sensor

Ordering Information

- ABS M4 Kit 1 F 02U V00 289-01
- ABS M4 Kit 2 F 02U V00 290-01

Europe:

Bosch Engineering GmbH
Motorsport
Robert-Bosch-Allee 1
74232 Abstatt
Germany
Tel.: +49 7062 911 79101
Fax: +49 7062 911 79104
motorsport@bosch.com
www.bosch-motorsport.de

North and South America:

Bosch Engineering North America
Motorsports
38000 Hills Tech Drive
Farmington Hills, MI 48331-3417
United States of America
Tel.: +1 248 876 2977
Fax: +1 248 876 7373
motorsport@bosch.com
www.bosch-motorsport.com

Asia Pacific:

Bosch Engineering Japan K.K.
Motor Sport Department
3-33-8 Tsuruya-cho, Kanagawa-ku, Yokohama-shi
Kanagawa 221-0835
Japan
Tel.: +81 45 410 1650
Fax: +81 45 410 1651

Represented by