



# HP Control Valve DSV



- ▶ Working range 10 to 200 bar
- ▶ Aluminum housing

The DSV is specially designed for regulation of pressure in the common rail of high pressure injection systems.

## Application

Pressure range	10 to 200 bar
Flow quantity	Max. 220 l/h
Operating temperature range	-20 to 130°C
Max. temperature of location	140°C (max. 5 min)

## Technical Specifications

### Mechanical Data

Weight	135 g
Size	32 x 54 x 56 mm
Housing	Aluminum

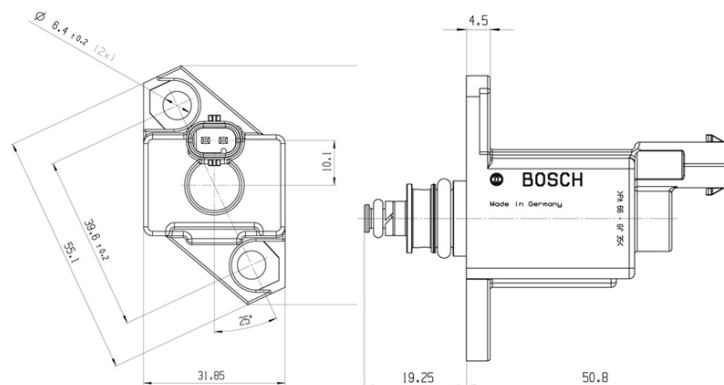
### Electrical Data

Operating voltage	6.5 to 18 V
Operation current	$I_{\max} = 2.2 \text{ A}$

### Connectors and Wires

Connector	Please see Ordering Information
-----------	---------------------------------

## Dimensions



## Ordering Information

<b>HP Control Valve DSV</b> Connector Bosch Compact	<b>0 261 540 011</b>
<b>HP Control Valve DSV</b> Connector ASL 1-06-05SB-HE	<b>B 261 209 805-02</b>
<b>HP Control Valve DSV</b> Without connector	<b>B 261 209 806-02</b>

**Europe:**  
Bosch Engineering GmbH  
Motorsport  
Robert-Bosch-Allee 1  
74232 Abstatt  
Germany  
Tel.: +49 7062 911 79101  
Fax: +49 7062 911 79104  
motorsport@bosch.com  
www.bosch-motorsport.de

**North and South America:**  
Bosch Engineering North America  
Motorsports  
38000 Hills Tech Drive  
Farmington Hills, MI 48331-3417  
United States of America  
Tel.: +1 248 876 2977  
Fax: +1 248 876 7373  
motorsport@bosch.com  
www.bosch-motorsport.com

**Asia Pacific:**  
Bosch Engineering Japan K.K.  
Motor Sport Department  
3-33-8 Tsuruya-cho, Kanagawa-ku, Yokohama-shi  
Kanagawa 221-0835  
Japan  
Tel.: +81 45 410 1650  
Fax: +81 45 410 1651

**Represented by**