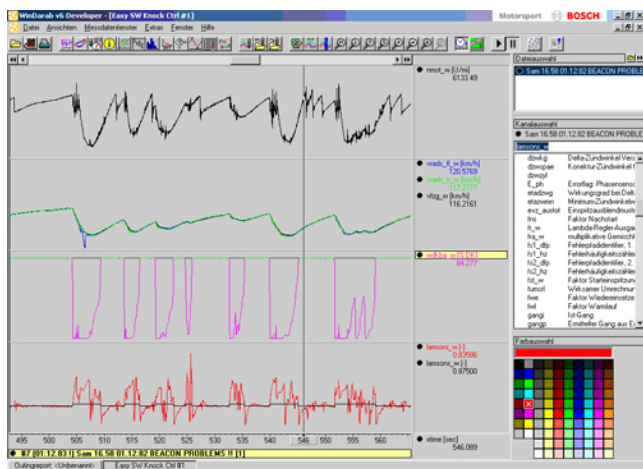




WinDarab



► Evaluation tool for monitoring and analyzing of logged data

WinDarab is an evaluation tool for monitoring and analyzing of logged data. It is Windows-based and specially designed for motorsports use. Depending on the functionality the software is available in a “Light” and an “Expert”-version. Additionally we offer a “Free” version that works without dongle.

Encryption of data / access rights

The on-board recorded measuring data will be encrypted in the data logger via a so-called project key. Each project key belongs to a specified project or customer.

Reading or viewing data with WinDarab „Light“ or „Expert“, is only possible with a dongle with suitable key information on it.

Dongle-free working with WinDarab-Free

For basic data analyzing tasks we offer WinDarab-Free at no charge. To ensure our customers data every WinDarab-Free installation has to be linked to the customer project keys. Please contact your customer support engineer for a customized WinDarab-Free Installation CD.

WinDarab-Free can be used till a WinDarab-Light or -Expert is installed on the PC. Afterwards the installation of WinDarab-Free is no longer executable.

Functions

Data evaluation

- Auto load and auto store
- Adjustable axis: time or distance
- Direct read-in of memory data without reader
- Graphic display of all measured and stored channels
- Various displays available (analogue and digital)
- Various display set-ups selectable and storable
- Lap trigger signal included

Applications

- Creating of race tracks
- Several segments adjustable for each race track
- Lap reports and lap comparison
- Inform displays
- Data extract and export
- Min./max. calculations
- Histograms
- Mathematical functions
- Filter functions incl. FFT
- x/y-plots
- Calculation of differences lap by lap

Technical Specifications**Variations**

| | Free | Light | Expert |
|--|------|-------|-----------|
| Max. number of opened files | 2 | 4 | unlimited |
| Max. number of measuring data windows | 1 | 2 | unlimited |
| Max. number of areas in measuring data windows | 2 | 4 | unlimited |
| Views histogram | + | + | + |
| Views x/y-plot | + | + | + |
| Views Distribution | - | + | + |
| Views min/max-tables | - | + | + |
| Views Fourier-transformation | - | + | + |
| Views outing report | - | 8/1* | unlimited |
| Views lap analysis | - | - | + |
| Views flowcharts | - | - | + |
| Views instrument panel | + | + | + |
| User defined physical units | + | + | + |
| Language support German/English | + | + | + |
| Racetrack generation via speed/lateral G or GPS | + | + | + |
| ASCII export | + | + | + |
| Matlab import (separated tool) | + | + | + |
| Extras functions/conditions | - | - | + |
| Extras differences | - | + | + |
| Extras settings/comments | - | - | + |
| Measuring data window – area channel name – view options | - | - | + |
| Desktop load/save | + | + | + |
| Telemetry | - | + | + |

*8 columns / 1 window

Function requirements**PC**

IBM PC Pentium/AMD Athlon compatible, min. 1.6 GHz

Min. 1 GB RAM

Min. 1 GB free HD space

VGA / WGA monitor (min. 1,024 x 768)

Operating systems

Windows XP 32 Bit, Vista 32 Bit

Ordering Information

| | |
|------------------------|-------------------------|
| WinDarab-Free | on request |
| WinDarab-Light | F 01E B01 402-01 |
| WinDarab-Expert | F 01E B01 418-01 |
| Upgrade | on request |

Europe:

Bosch Engineering GmbH
Motorsport
Robert-Bosch-Allee 1
74232 Abstatt
Germany
Tel.: +49 7062 911 79101
Fax: +49 7062 911 79104
motorsport@bosch.com
www.bosch-motorsport.de

North and South America:

Bosch Engineering North America
Motorsports
38000 Hills Tech Drive
Farmington Hills, MI 48331-3417
United States of America
Tel.: +1 248 876 2977
Fax: +1 248 876 7373
motorsport@bosch.com
www.bosch-motorsport.com

Asia Pacific:

Bosch Engineering Japan K.K.
Motor Sport Department
3-33-8 Tsuruya-cho, Kanagawa-ku, Yokohama-shi
Kanagawa 221-0835
Japan
Tel.: +81 45 410 1650
Fax: +81 45 410 1651

Represented by