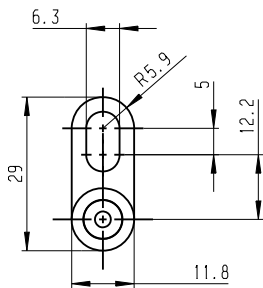
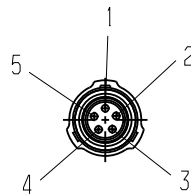


© Robert Bosch GmbH. Alle Rechte vorbehalten, auch bzgl. jeder Verfügung, Vervielfältigung, Reproduktion, Bearbeitung, Weitergabe sowie für den Fall von Schutzrechtsmeldungen.

© Robert Bosch GmbH. All rights reserved, also regarding any disposal, exhibition, reproduction, editing, distribution, as well as in the event of applications for industrial property rights.

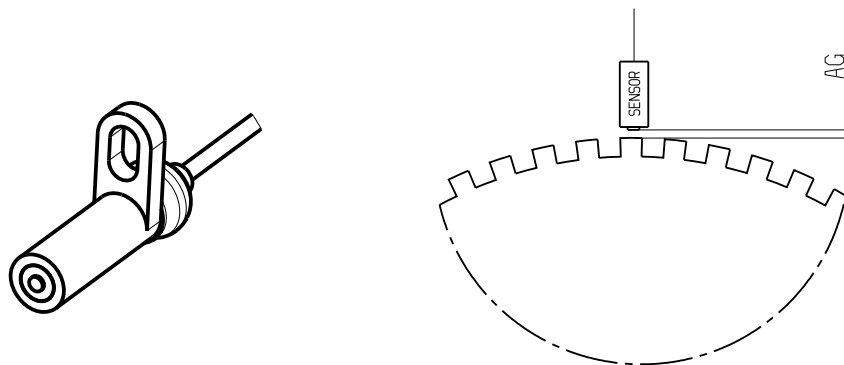
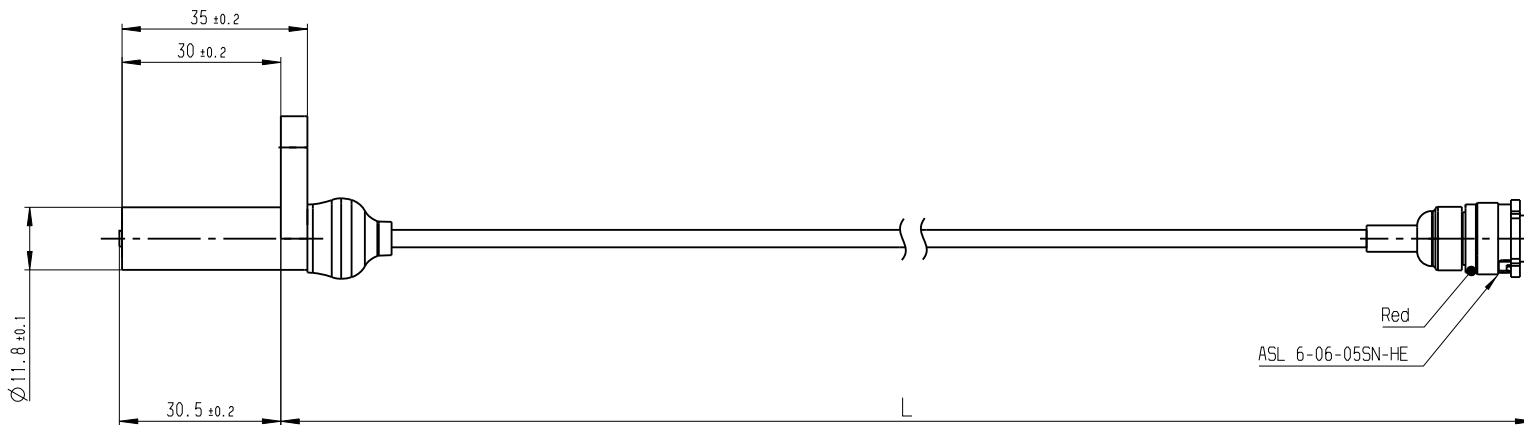


Front view  
Scale: 1:1



ASL 6-06-05SN-HE

- 1: not connected
- 2: Signal -
- 3: Signal +
- 4: not connected
- 5: Screen



Surf. roughn. N12A D53:2003-08 Rauheitsang.: N12A D53/1:2003-08		
Edges: DIN ISO 13715: 2000-12 Kanten:		
Metr. ISO	w/o surface	with surface
Metr. ISO	ohne Oberfl.	mit Oberfl.
Ext. thread Aussengew.	.	.
Int. thread Innengew.	.	.
Non-toleranced dimensions Nicht tolerierte Masse		
>0,2 ...0,5	>0,5 ...3	>3 ...6
>6 ...30	>30 ...120	>120 ...900
±0,1	±0,1	±0,1
±0,2	±0,3	±0,5
Radii, chamfers Rundungen, Fasen		
±0,1	±0,2	±0,5
±1	±2	±4
Angles, dim. of the shorter side Winkel, Masse der kuerzeren Schenkel		
...10	> 10 ...50	> 50 ...120
> 120 ...400	> 400 ...1200	> 1200 ...4000
±1'	±30'	±20'
±10'	±5'	
Tolerances of form and position Form- und Lagetoleranzen DIN ISO 2768-2-H:1991-04 (N13 B92/1: 2000-03)		
ISO lim. of size ISO-Grenzmasse		
Size Mass	to bis	Tol. class Toleranz- klasse
over ueber		Lim. deviations Grenz- abmasse
.	.	.
.	.	.
.	.	.
.	.	.

01	Erstellung	20100120	FzF	SgW		WzP		
Ind.	Change/Aend.	YYYYMMDD	Drawn/Gez.	Checked/Gepr.	Releas./Freig.	BWN	Resp. dept./Veranlw.Abt.	
Treatment	Behandlung						Missed details/Fehlende Angaben	Size/Gst.
Mat./Stoff	--						From/Aus	--
Lang./Spr.	en/de	Wght./Gew.	1:1		BOSCH		DRW-A3	
Crit. P.	Scale/M.stab	Mat.meets/Stoffe s.	Syst.	N2580-1		CAT	Ind. Format	
MNR	--						A3	
F02U V00 693-01							DP/TD	1/1
Bestell Nr. order no.							Repl. for.	Repl. by.

-	-	-	-	-
F02U V00 693-01	1000 +/- 5	0.5 ± 0.25	ASL 6-06-05SN-HE	-
Bestell Nr. order no.	Länge - L length [mm]	AG Air Gap [mm]	Stecker connector	-