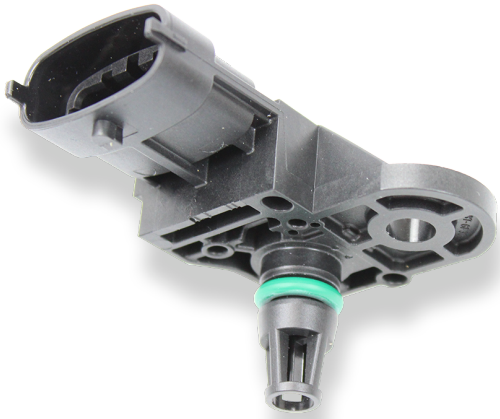


Pressure Sensor Combined PST 4



- ▶ Pressure: 0.4 to 4 bar
- ▶ Temperature: -40 to 130°C
- ▶ Power supply: 5 V
- ▶ Weight: 22 g

This sensor is designed to measure absolute air pressure, especially the air box pressure of gasoline or Diesel engines plus temperature.

An integrated circuit combines a piezo-resistive sensor element and electronic systems for signal-amplification and temperature-compensation. The output of the sensor is an analog, ratio metric signal.

Application

Application 1	0.4 to 4 bar (a)
Application 2	-40 to 130°C
Reference	Absolute
Max. pressure	6 bar
Operating temp. range	-40 to 130°C
Media temp. range	-40 to 130°C
Storage temp. range	0 to 40°C
Max. vibration	According to ISO 16750-3

Technical Specifications

Mechanical Data

Mounting	M6 + Washer
Weight without wire	22 g
Fitting	12.05 ± 0.8 mm
Sealing	O-ring 7.59 x 2.62 mm

Electrical Data

Power supply U_s	4.75 to 5.25 V
Max power supply U_s max	16 V
Full scale output U_A	0.386 to 4.5 V
Current I_s	12 mA

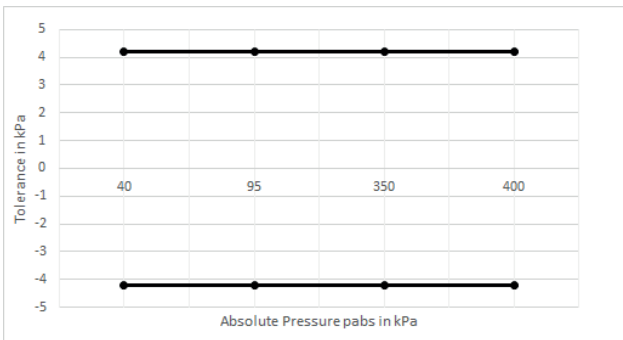
Characteristic 1

Response time T10/90	1 ms
Compensated range	10 to 85°C
Tolerance (FS) at $U_s = 5$ V	0.042 bar
Sensitivity	1,143 mV/bar
Offset	-71.43 mV

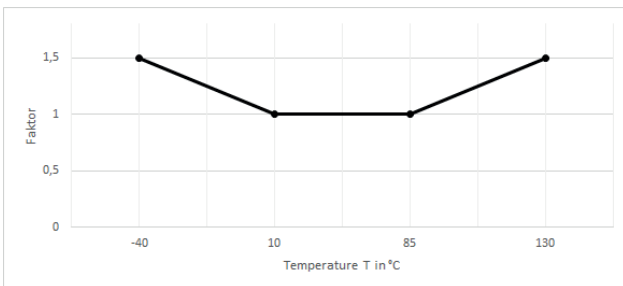
Characteristic 2

T [°C]	R [Ohm]
-40	45,303
-30	26,108
-20	15,458
-10	9,395
0	5,895
10	3,791
20	2,499
25	2,056
30	1,706
40	1,174
50	833.8
60	595.4
70	435.6
80	322.5
90	243.1
100	186.6
110	144.2
120	112.7
130	89.28

Tolerance



Expansion of Tolerance



Connectors and Wires

Connector	Bosch Compact
Mating connector	D261.205.360-01
Pin 1	Ground
Pin 2	Temperature Signal
Pin 3	Power Supply
Pin 4	Pressure Signal

Installation Notes

The PST 4 is designed for engines using ROZ95, ROZ98, M15, E22 and Diesel.

The sensor can be connected directly to most control units.

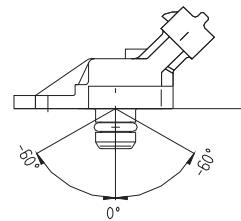
To avoid noise, an ECU-input circuit with a RC-low pass filter (tau = 2 ms) is recommended.

Use engine oil (5W40) as O-Ring grease (no silicone based grease).

Avoid miss-pinning (max. 5 minutes at I = 0.3 A).

Please find further application hints in the offer drawing and free download of the sensor configuration file (*.sdf) for the Bosch Data Logging System at our homepage.

To avoid damage caused by condensate the maximum mounting position from vertical is +60°.



Safety Note

The sensor is not intended to be used for safety related applications without appropriate measures for signal validation in the application system.

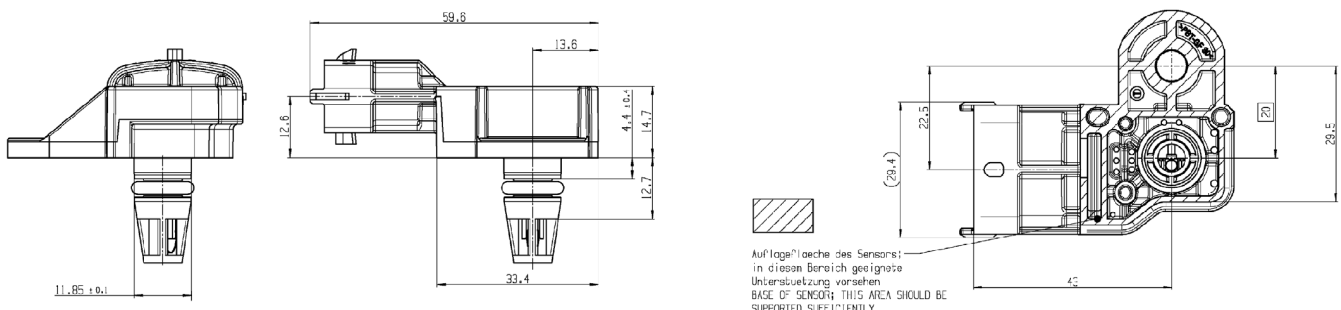
Legal Restrictions

Generally blocked are direct and indirect business involving high risk destinations, including Russia, Belarus, Cuba, Iran, North Korea, Syria, Libya, Afghanistan, and certain non-governmental controlled Ukrainian regions. This list may change as geopolitics evolve.

Ordering Information

Pressure Sensor Combined PST 4
Order number **0261.230.423**

Dimensions



Represented by:

Europe:
Bosch Engineering GmbH
Motorsport
Robert-Bosch-Allee 1
74232 Abstatt
Germany
motorsport@bosch.com
www.bosch-motorsport.de

North America:
Bosch Engineering North America
Motorsport
38000 Hills Tech Drive
Farmington Hills, MI 48331-3417
United States of America
motorsport@bosch.com
www.bosch-motorsport.com

Asia-Pacific:
Bosch Engineering Japan K.K.
Motorsports Department
1-9-32 Nakagawachuo, Tsuzuki-ku
Yokohama-shi
Kanagawa, 224-8601
Japan
motorsport@jp.bosch.com
www.bosch-motorsport.jp

Australia, New Zealand and South Africa:
Robert Bosch Pty. Ltd
Motorsport
1555 Centre Road
Clayton, Victoria, 3168
Australia
motor.sport@au.bosch.com
www.bosch-motorsport.com.au