

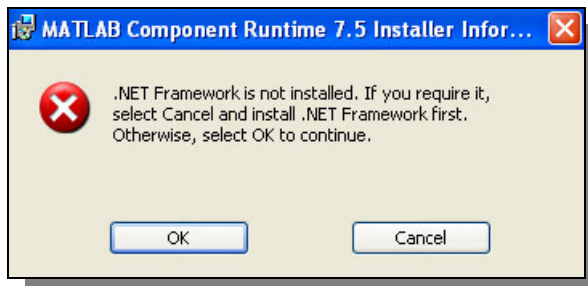
Install instruction LapSim

1. Download the install package
If you run LapSim first time, please download the big package (148MB)
2. Unzip the package into your desired folder
3. Run MSDInstall
4. After a successful installation, exit setup window
5. Run MCRInstaller and follow the installation steps
<Drive>:\Bosch\Driver\MCR\ or
<Your unzip folder>\LapSim_incl_MCR\Support\BoschFiles\Driver\MCR\

Note

If you are deploying .NET component applications to programmers or end users, make sure to tell them to install .NET Framework before installing the MCR. The MCRinstaller.exe must detect the presence of .NET framework on a system for it to install MCR .NET support.

If no Microsoft .NET Framework is installed, the following message will appear during the MCR-Installation:



Press OK-Button, if you do not need the Microsoft .NET Framework.

Otherwise press Cancel and Install Microsoft .NET Framework before you install the MCRInstaller:

<http://www.microsoft.com/downloads/Search.aspx?displaylang=en>

6. Start LapSim toolbox and run LapSim by the appropriated button

Install instruction Update from

1. Download the install package
If you have already installed LapSim and you just want to update, please download the small package (7,5 MB)
2. Unzip the package into your desired folder
3. Run MSDInstall
4. After a successful installation, exit setup window
5. Start LapSim toolbox and run LapSim by the appropriated button